



SEEK THE LIGHT

Beaconhouse

Pre-School

EARLY YEARS EDUCATION

Play to Learn | Learn to Play

THE BEACONHOUSE ADVANTAGE

Beaconhouse School System is internationally acknowledged for its achievements in academics and excellence in educational management for over **46 years**. Today we are proud to make significant contributions in providing quality pre-school programmes in **8 countries**.

In Malaysia, we are proud to have achieved successful milestones in providing decades of quality pre-school education through our dedicated pool of educators. Today we are proud to be a leader in providing this purposeful and active form of learning which engages the child's mind and heart to learn. Our next milestone will see the enhancement of technology supported classrooms.

Our **Enhanced Learning Environment (ELE)** will bring learning to a new level of fun and excitement. Learning will be a totally new experience for our children as exploration and discovery of knowledge will go beyond the four walls of the classrooms and into the future.





A JOYOUS & MEANINGFUL WAY TO LEARN



In Beaconhouse Pre-school, it is all about joyous learning and celebrating the success of children. The centre of our curriculum is 'Play'. Yes, it is all about play to learn, learn to play. Many researches have proven that purposeful play or educational play is in fact a powerful vehicle of learning. The primary goal at our pre-schools is to provide a wide range of exciting, meaningful and fun activities designed to celebrate early successes.

From our Play Group to Pre-school Programme, young children are progressively supported to grow and develop during their formative years. Our developmentally appropriate programme supports the critical years of young children where they experience rapid growth and important brain development, and reach decisions about their own worth and abilities. Our teachers are trained to implement our early years curriculum to stimulate children both, mentally and physically, thereby equipping and enabling each child to face the challenging world ahead of them.





THE AIMS OF THE EARLY YEARS CURRICULUM

The BSS Early Years Curriculum aims to provide an environment in which teachers establish individual relationships with students; plan and engage students in experiences which promote the acquisition of knowledge; develop skills; and encourage children to build positive relationships with other children and adults in this environment.

Our vision is that every child:



Develops a healthy sense of 'self'



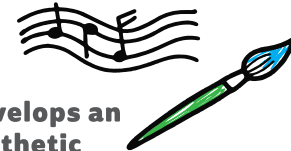
Expresses constructive curiosity and exploratory behaviour



Finds a valued place in the school community



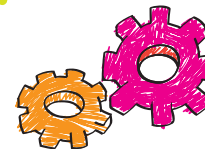
Learns to form healthy and durable relationships with others



Develops an aesthetic appreciation



Has a sense of reverence









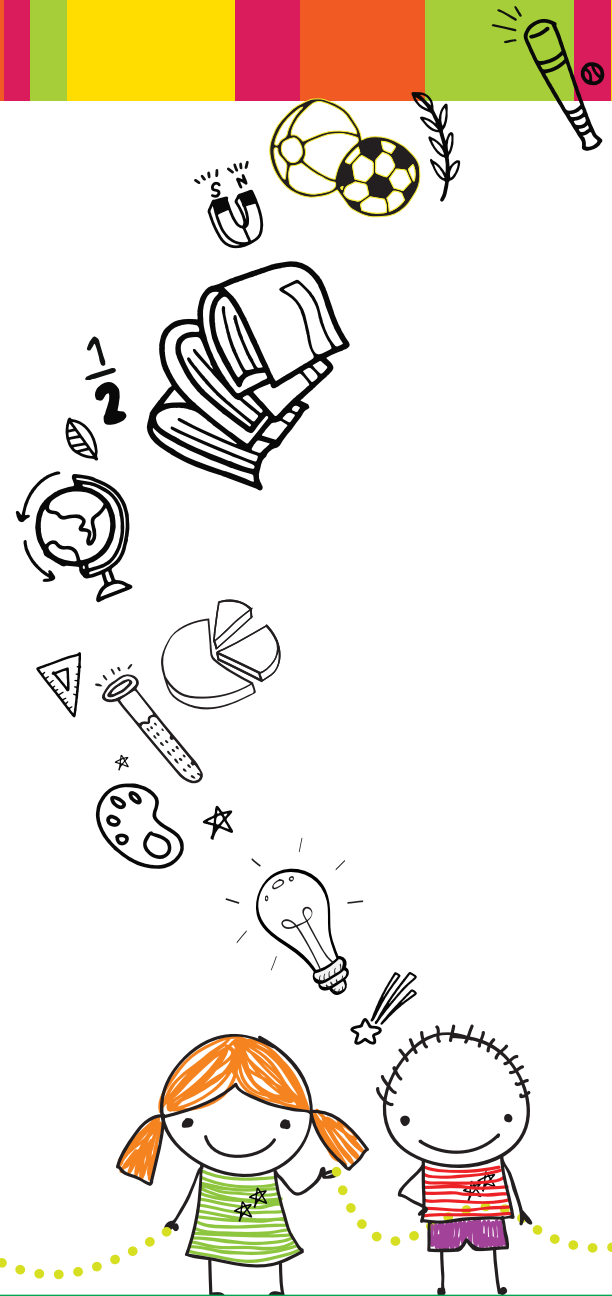
Masters a basic core of knowledge, skills and attitudes.

THE CURRICULUM FRAMEWORK

At the Beaconhouse School System, the Early Years Curricula are based upon active forms of learning, on enquiry, on discovery, and on first-hand experiences. They are framed in terms of activity and experiences rather than knowledge to be acquired and facts to be stored. The subjects are referred to as areas of experience.

In the Early Years, the students experience the following areas:

-  **Communication, Language and Literacy**
English (Jolly Phonics), Bahasa Malaysia and Mandarin
-  **Mathematical Development**
Fun with Numbers
-  **Knowledge & Understanding of the World**
Project-Based Learning (Exploration & Discovery)
-  **Creative Development**
Art and Crafts, Music and Movement, Computer and Interactive Smart Board
-  **Personal, Social, Emotional and Health Education**
Group Activities, Educational Field Trips and Presentation Skills (Concert)
-  **Physical Development**
Gymnastics and Outdoor Activities



Pre-school regular programme

Monday to Friday 8.30am to 12.30pm

Full day programme

(Pre-School Regular
+ After School Care Programme)

Monday to Friday 8.30am to 6.00pm

After school enrichment programmes

(Optional)

Monday to Friday

- **Speech and Drama**
- **Tae Kwon Do**
- **Dance**
- **Robotics**
- **Art and Crafts**
- **Mandarin**
- **Agama**



You are welcome to view our unique and supportive learning environment. Trial classes are available for your child to experience.





www.beaconhouse.edu.my

BEACONHOUSE NEWLANDS EARLY YEARS PRE-SCHOOLS

Beaconhouse Newlands Early Years, Bangsar

No. 2, Lorong Bukit Pantai 7,
Off Lorong Bukit Pantai 8,
Jalan Bukit Pantai, 59100 Bangsar,
Wilayah Persekutuan, Kuala Lumpur
T : +603 2201 5116
E : bangsar@bney.edu.my
FB : @BeaconhouseNewlandsEarlyYears

Beaconhouse Newlands Early Years, SS2

No. 37, Jalan SS2/44,
47300 Petaling Jaya,
Selangor Darul Ehsan
T : +603 7865 0453
E : ss2@bney.edu.my
FB : @BeaconhouseNewlandsEarlyYearsSS2

Beaconhouse Newlands Early Years, U Thant Ampang

No. 23, Jalan Taman U Thant, Ampang Hilir,
55000 Wilayah Persekutuan,
Kuala Lumpur
T : +603 2181 2542
E : uthant@bney.edu.my
FB : @BeaconhouseNewlandsEarlyYearsAmpangUThant

BEACONHOUSE PRE-SCHOOLS

Beaconhouse Subang Jaya

No. 25 & 27, Jalan SS19/2,
47500 Subang Jaya, Selangor Darul Ehsan
T : +603 5632 9622
E : subang-jaya@beaconhouse.edu.my
FB : @beaconhousesubang

Beaconhouse Gasing

No. 168, Jalan Gasing,
46000 Petaling Jaya, Selangor Darul Ehsan
T : +603 7781 5282
E : gasing@beaconhouse.edu.my
FB : @beaconhousegasing

Beaconhouse Puchong

No. 1, Jalan Puteri 10/17, Bandar Puteri,
47100 Puchong, Selangor Darul Ehsan
T : +603 8060 8775
E : puchong@beaconhouse.edu.my
FB : @beaconhousepuchong

Beaconhouse Sri Petaling

No. 32A, Lorong Pikrama 1, Bandar Baru Sri Petaling,
57000 Kuala Lumpur, Wilayah Persekutuan
T : +603 9059 2133
E : sri-petaling@beaconhouse.edu.my
FB : @beaconhousesripetaling

Beaconhouse Gamuda Gardens

Bandar Gamuda Gardens Kuang
48050 Rawang Selangor
T : +603-5632 2100
E : marketing@beaconhouse.edu.my
FB : @beaconhousegamudagardens

Beaconhouse Klang

No. 43, Jalan Ibus, Southern Park,
41200 Klang, Selangor Darul Ehsan
T : +603 3371 2340
E : klang@beaconhouse.edu.my
FB : @beaconhousekla

Beaconhouse Sarah's Klang

No. 9 & 11, Lebuhraya Seraya, Taman Palm Grove,
41200 Klang, Selangor Darul Ehsan
T : +603 3373 8117
E : sarahs.klang@beaconhouse.edu.my
FB : @beaconhousesarahs

PRIVATE NATIONAL SCHOOLS

Beaconhouse Sri Lethia

No. 109, Jalan Limau, Off Jalan Istana,
41000 Klang, Selangor Darul Ehsan
T : +603 3373 3771
E : sri-lethia@beaconhouse.edu.my
FB : @beaconhousesrilethia

Beaconhouse Sri Murni

Lot No. 2854, Batu 9, Jalan Cheras,
43200 Cheras, Selangor Darul Ehsan
T : +603 9075 1662/1663
E : sri-murni@beaconhouse.edu.my
FB : @BeaconhouseSriMurniCheras

INTERNATIONAL SCHOOLS

Beaconhouse Sri Inai International

Lot No. 314, Jalan Jenjarum,
Off Jalan SS23/6, Taman SEA,
47400 Petaling Jaya, Selangor Darul Ehsan
T : +603 7804 6025
E : inai-international@beaconhouse.edu.my
FB : @bsiismalaysia

Beaconhouse Newlands International

Lot No. 2855, Batu 9, Jalan Cheras,
43200 Cheras, Selangor Darul Ehsan
T : +603 9082 4759
E : newlands@beaconhouse.edu.my
FB : @BeaconhouseNewlandsCheras